

FOR IMMEDIATE RELEASE

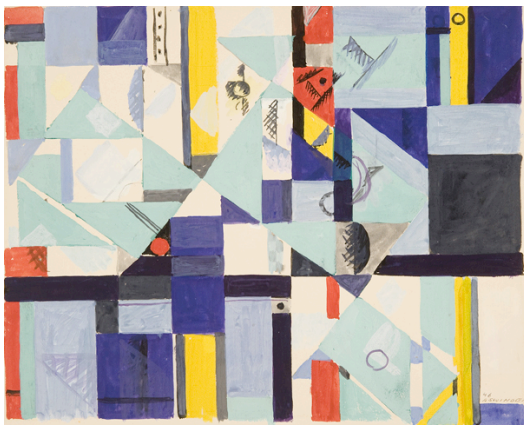
November 4, 2011

MEREDITH WARD FINE ART

Contact: Meredith Ward
Hilary Goldsmith
Tel: 212-744-7306

ALBERT SWINDEN: RHYTHMIC GEOMETRY

November 18 – December 30, 2011



Untitled Abstraction No. 59, 1946
Gouache on paper, 10 7/8 x 13 3/4 inches

Albert Swinden: Rhythmic Geometry will be on view at Meredith Ward Fine Art from November 18 to December 30, 2011. The show will feature 17 works on paper by the New York-based artist dating from 1938 to 1949. This is the first monographic exhibition of Swinden’s work in New York in more than 30 years, and many of the works have never been shown before.

“Swinden’s oeuvre is relatively small, and much of his early work was tragically destroyed by a studio fire in 1940,” stated Meredith Ward. “As a result, there have been few opportunities to see and study the range of his mature work. This exhibition brings to light a group of fresh and dynamic works on paper that have remained in the artist’s family.”

The show will focus on a group of gouaches that exemplify Swinden’s unique language of abstraction. Works such as *Untitled Abstraction No. 59, 1946* demonstrate how he organized form and color to create highly refined compositions. As art historian Susan Larsen noted in her essay for the catalog that accompanies the exhibition, “The vitality and beauty of Swinden’s mature style lives in a group of gouache compositions on paper created in the years immediately following the studio fire. These have the same intricate and graceful geometry, the same sure hand and most of all, his clarity of conception.”

In his 1938 essay “On Simplification,” published for the American Abstract Artists exhibition that year, Swinden explained his method of abstraction not as a break from the art of the past, but as an extension and continuation of it: “What we examine and are affected by in any work of art, past or present, are the relationships expressed in it...By first limiting oneself greater concentration is made possible, permitting progression to fuller, richer form.” These works bear witness to Swinden’s vibrant and innovative presence on the New York scene at mid-century.

Albert Swinden (1901-1961) was born in Birmingham, England and after living with his family in Canada from the age of seven, immigrated to the United States in 1919. After a brief stay in Chicago, Swinden settled in New York City. He studied with Hans Hofmann at the Art Students League and eventually assisted in the formation of the American Abstract Artists group, serving as its first secretary. He began working in an abstract mode in the late 1920s and, as Larsen described, continued to pursue an art, “of pure form seen directly without the filter of theory.” He played a prominent role in the WPA Mural Division in New York and created a major mural in 1936-37 for the Williamsburg Houses in Brooklyn (now in The Brooklyn Museum).



Untitled Abstraction, 1941
Goauche on paper, 10 1/4 x 14 1/4 inches

He began working in an abstract mode in the late 1920s and, as Larsen described, continued to pursue an art, “of pure form seen directly without the filter of theory.” He played a prominent role in the WPA Mural Division in New York and created a major mural in 1936-37 for the Williamsburg Houses in Brooklyn (now in The Brooklyn Museum).

The exhibition will be accompanied by a fully-illustrated catalog with an essay by art historian Susan C. Larsen.

About the Gallery

Meredith Ward Fine Art opened in 2004 specializing in American art from the 19th century to the present. The gallery is the exclusive representative of the estates of John Marin and Larry Day. Meredith Ward Fine Art is located at 44 East 74^h Street in New York City and is open to the public Monday through Friday, 10am to 5:30pm and Saturday 12pm to 5pm. For more information or images, contact Hilary Goldsmith at 212-744-7306.

###